

PARTS AND INSTRUCTION BOOK



**MODELS FTW,
BAC, TAP**



N-C Carpet Binding and Equipment, Inc.
858 Summer Avenue * Newark, NJ 07104
Website: <http://www.n-ccarpet.com>
E-mail: nccarpet1@aol.com
Tel: (973)481-3500 * Toll Free (800)526-1184
Fax: (973)481-0839 * Canada (800)336-1184

NEEDLES FOR TAP, BAC AND FTW

Selection of proper needle size should be determined by size of thread used. Thread should pass freely through needle eye in order to produce a good stitch formation.

EC 800 SIZE23 ORDERING REPAIR PARTS

ILLUSTRATIONS

This catalog is so arranged as to simplify the ordering of repair parts. Exploded views of the various selections of the mechanism are shown so the parts may be seen in their actual position within the machine. On the page opposite the illustration is found the listing of the parts with their part numbers, descriptions and the number of pieces required in the particular view as shown.

Numbers in the first column are reference numbers only and indicate the position of the part in the illustration. Reference numbers should never be used in ordering parts. Always use the part number given in the second column.

Component parts of sub-assemblies which can be furnished for repairs are indicated by the fact that their descriptions are indented under the description of the main sub-assembly. Example.

Ref No.	Part No.	Description	Amt Required
23	29105Q	Looper Driver Eccentric Assembly	1
24	22559B	Bearing Cap Screw, upper	2
25	22894D	Eccentric Spot Screw	2
26	22894C	Eccentric Set Screw	3
27	22559A	Bearing Cap Screw, lower	2

It will be noted in this example that the eccentric and bearing are not listed. This is done for the reason that the replacement of these parts individually is not recommended and the complete sub-assembly should be ordered.

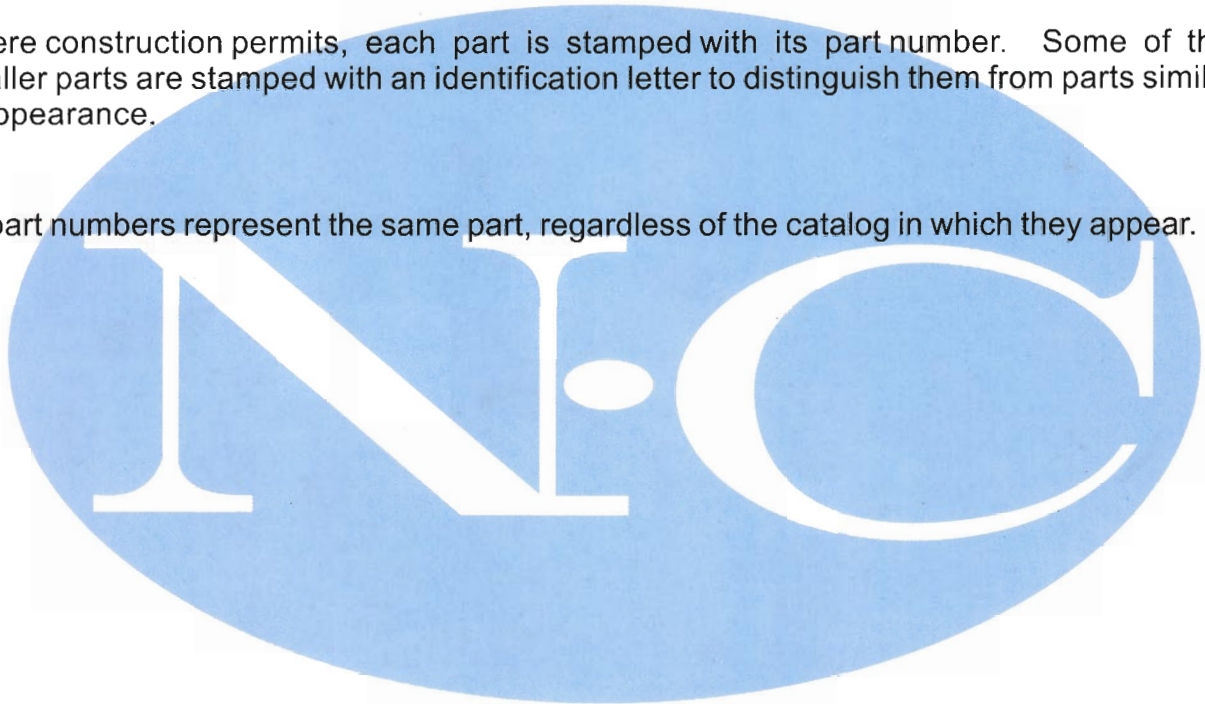
In those cases where the parts for the Class BAC, TAP and FTW are not the same, the difference will be shown in the illustrations and descriptions. When a part is used in all machines covered in this catalog no machine style is mentioned.

At the back of the book will be found a numerical index of all the parts shown in the illustration, which will facilitate locating the illustration and description when only the part number is shown.

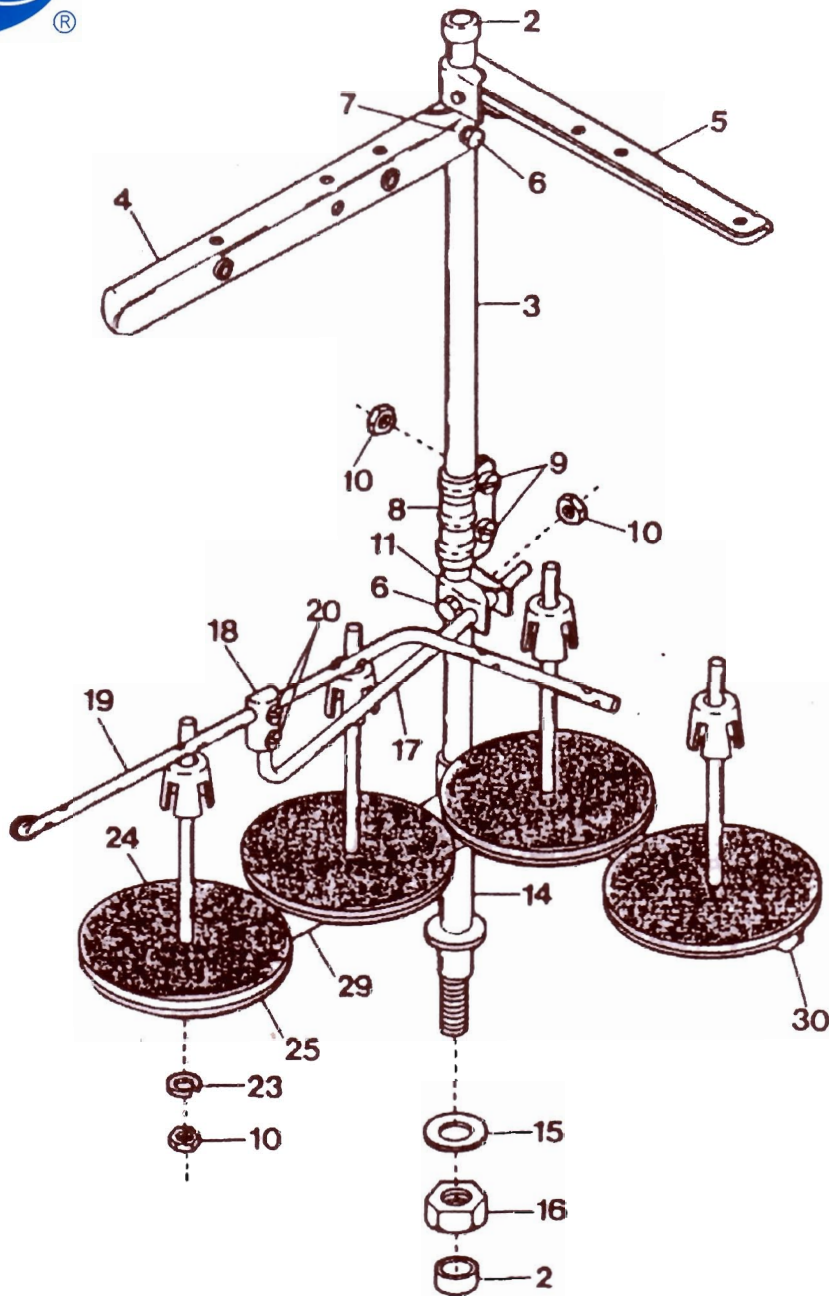
IDENTIFYING PARTS

Where construction permits, each part is stamped with its part number. Some of the smaller parts are stamped with an identification letter to distinguish them from parts similar in appearance.

All part numbers represent the same part, regardless of the catalog in which they appear.



FTW THREADING STAND

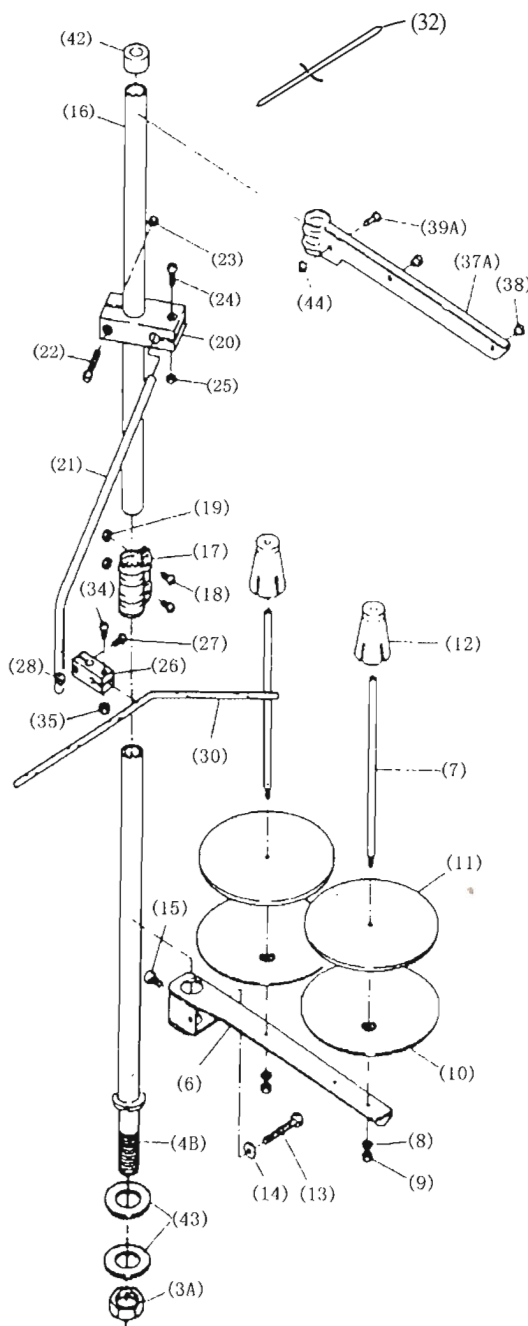


Set-Up Instructions for Thread Stands

FTW AND BAC

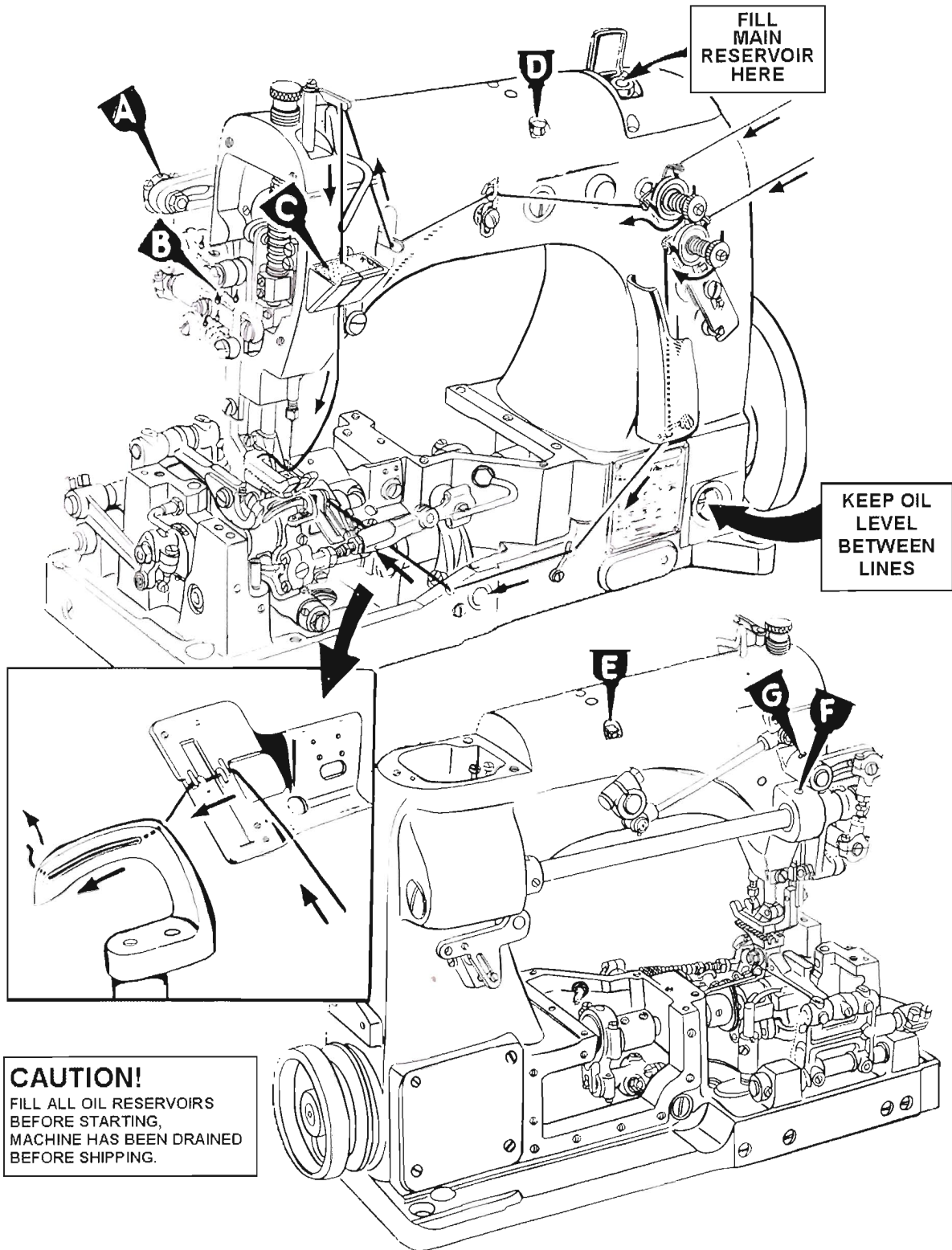
NOTE: The illustration shows the 2 Cone Thread Stand. So, please assemble other stands in the similar way, making sure the parts and their quantity are shown on the parts list.

Refer to the illustration and assemble parts



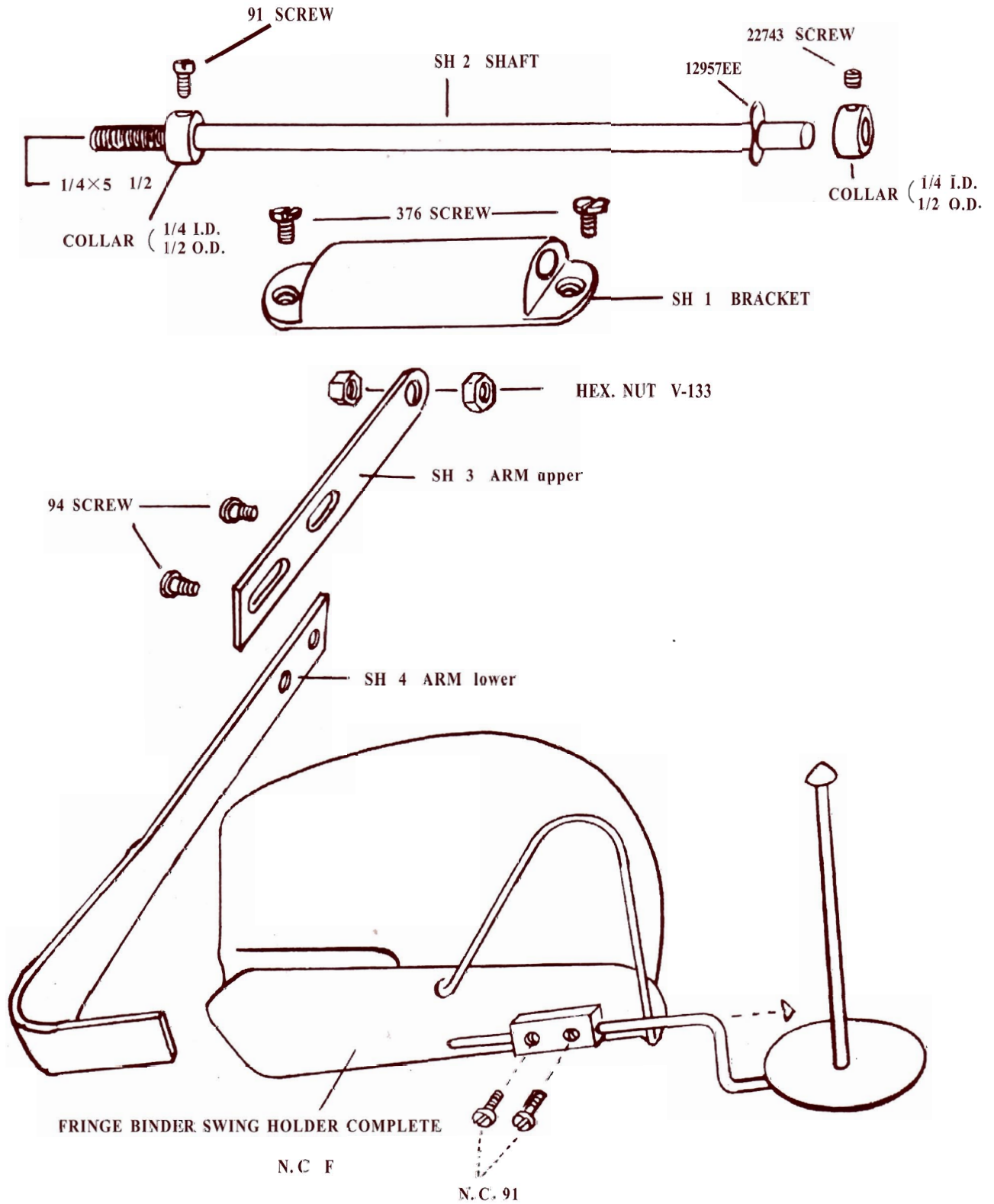
REF. NO.	NAME	2 CONE
	Thread Stand Assembly	1
	"	"
	"	"
	"	"
	"	"
(4B)	Thread Stand Rod (lower)	1
(43)	Washer	2
(3A)	Nut	1
(5)	Bracket	
(6)	Bracket	1
(7)	Spool Pin	2
(8)	Spring Washer	2
(9)	Nut	2
(10)	Spool Tray	2
(11)	Seat	2
(12)	Spool Retaining Fig	2
(13)	Screw	1
(14)	Washer	1
(15)	Screw	1
(16)	Thread Stand Rod (upper)	1
(17)	Joint	1
(18)	Screw	2
(19)	Nut	2
(20)	Holder (large)	1
(21)	Thread Guide Bar	1
(22)	Screw	1
(23)	Nut	1
(24)	Screw	1
(25)	Nut	1
(26)	Holder (small)	1
(27)	Screw	1
(28)	Nut	1
(29)	Thread Guide Bar	
(30)	Thread Guide Bar	
(31)	Thread Guide Bar	
(32)	Thread Guide Bar	1
(33)	Thread Guide Bar	
(34)	Screw	1
(35)	Nut	1
(36A)	Bracket	
(37A)	Bracket	1
(38)	Thread Eyelet	2
(39A)	Screw	1
(42)	Cap	1
(44)	Nut	1

Threading Chart for TAP*BAC*FTW

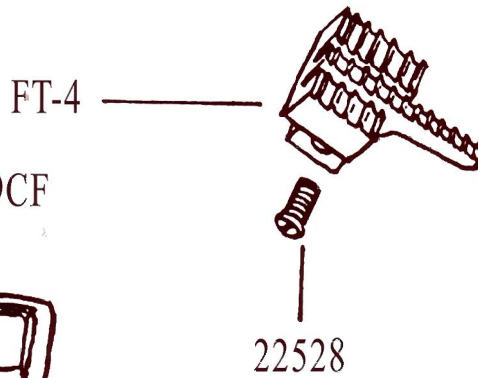
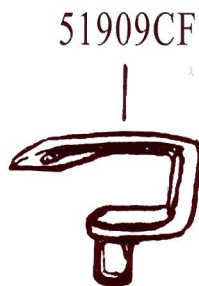
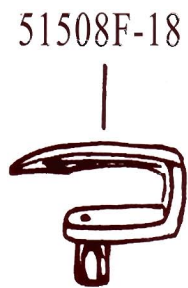
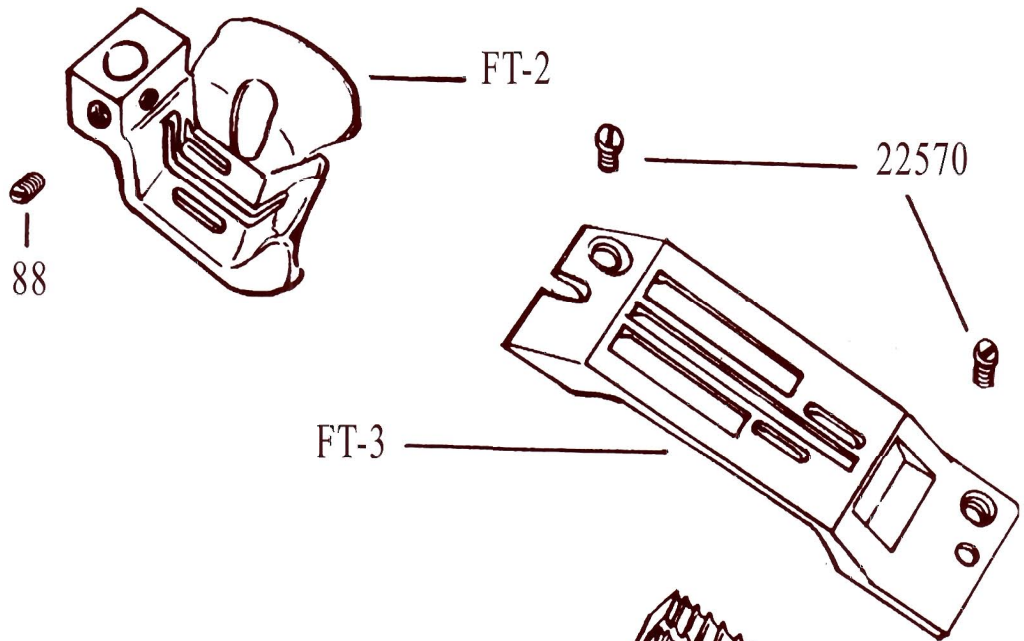
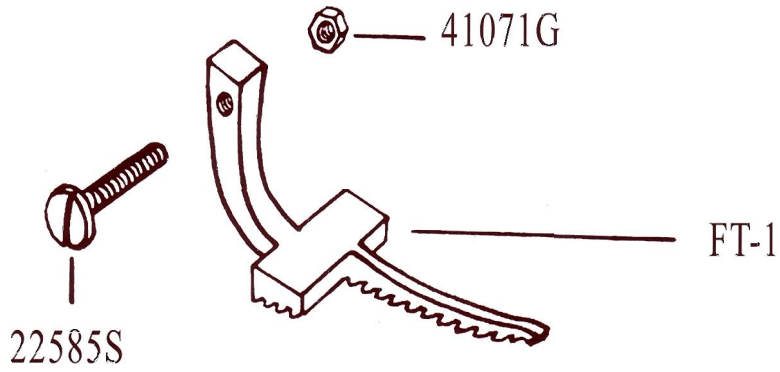




FTW FRINGE GUIDE ATTACHMENT

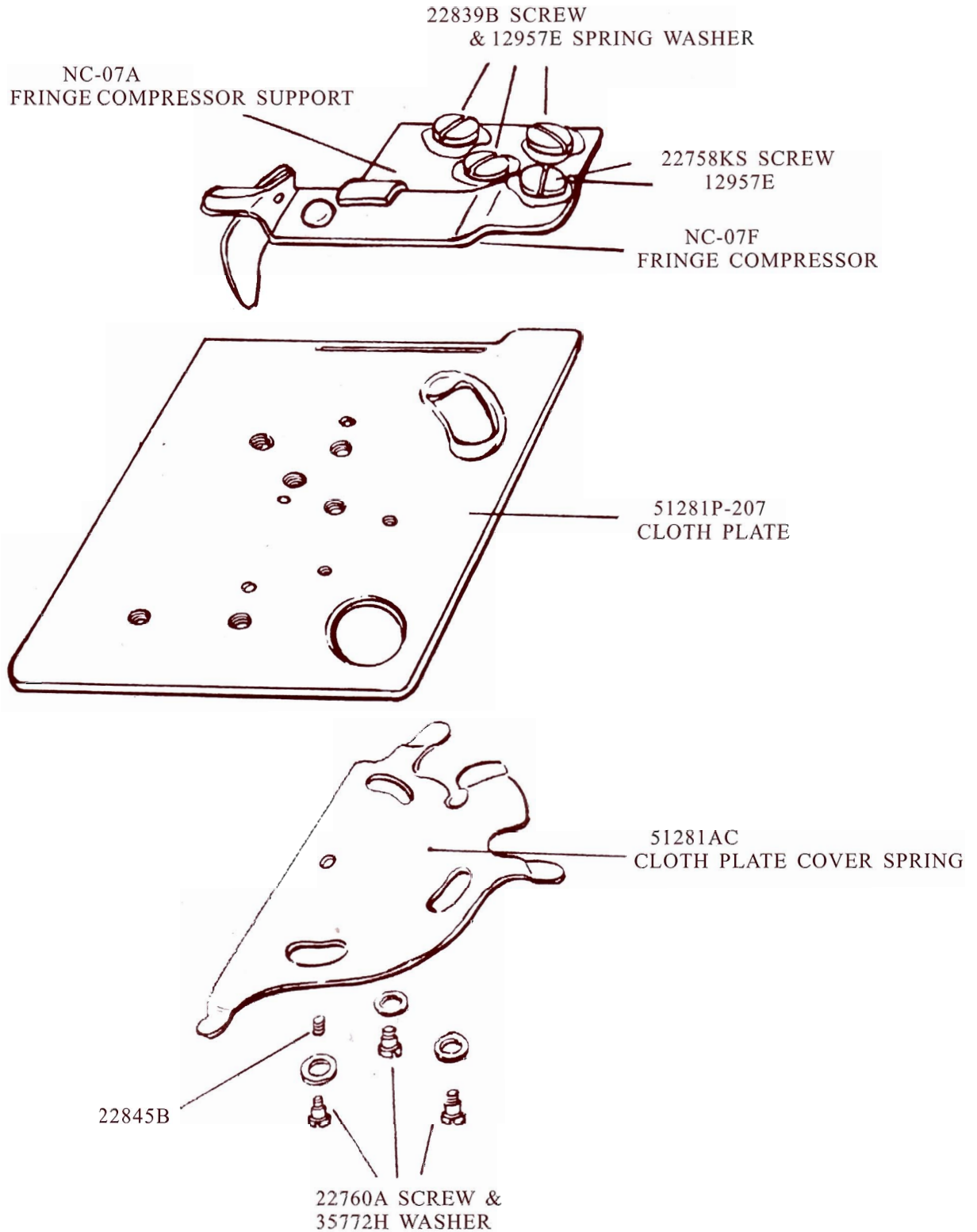


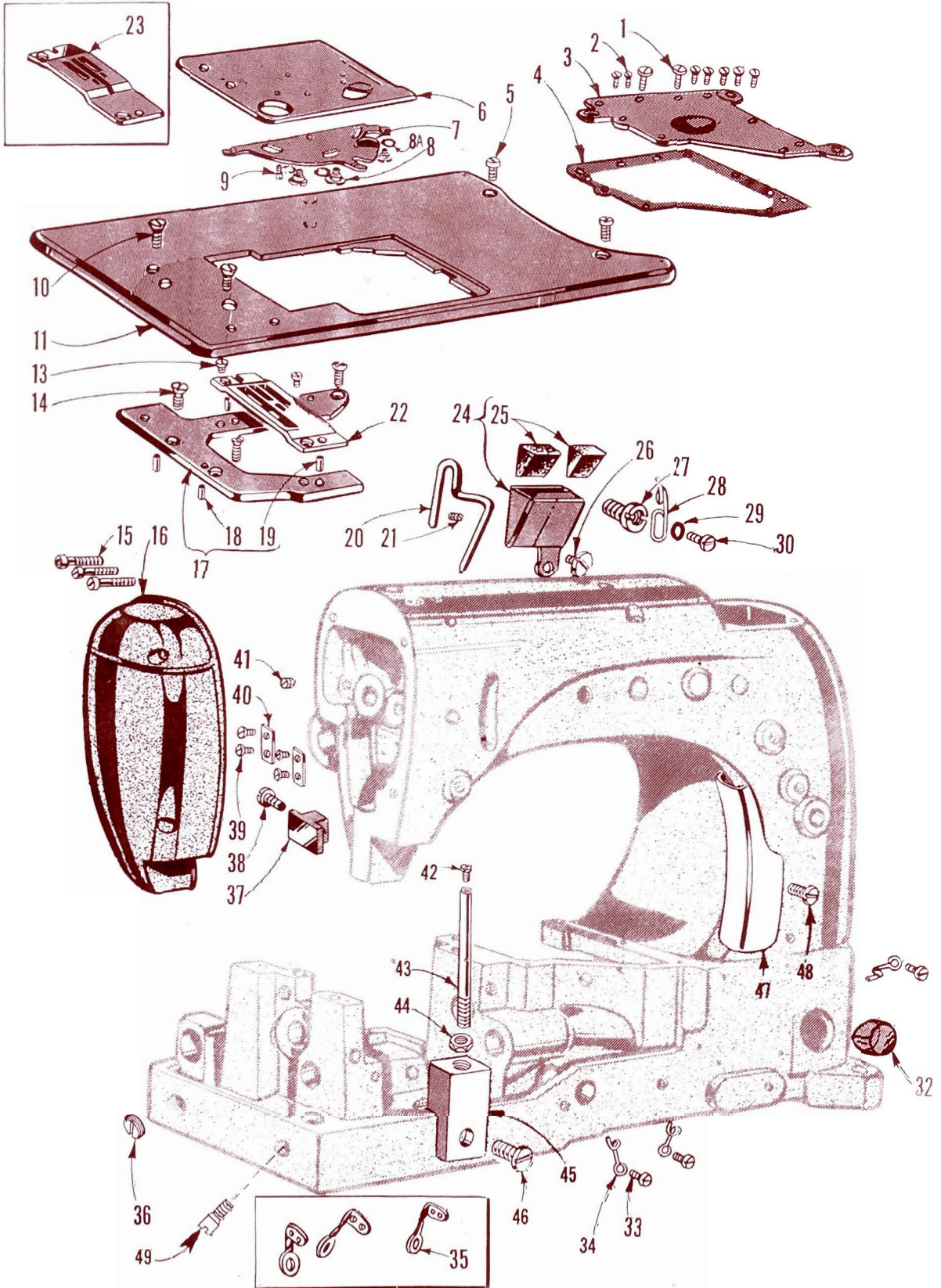
SPECIAL PARTS FOR FTW





FTW SPECIAL ASSEMBLY GUIDE

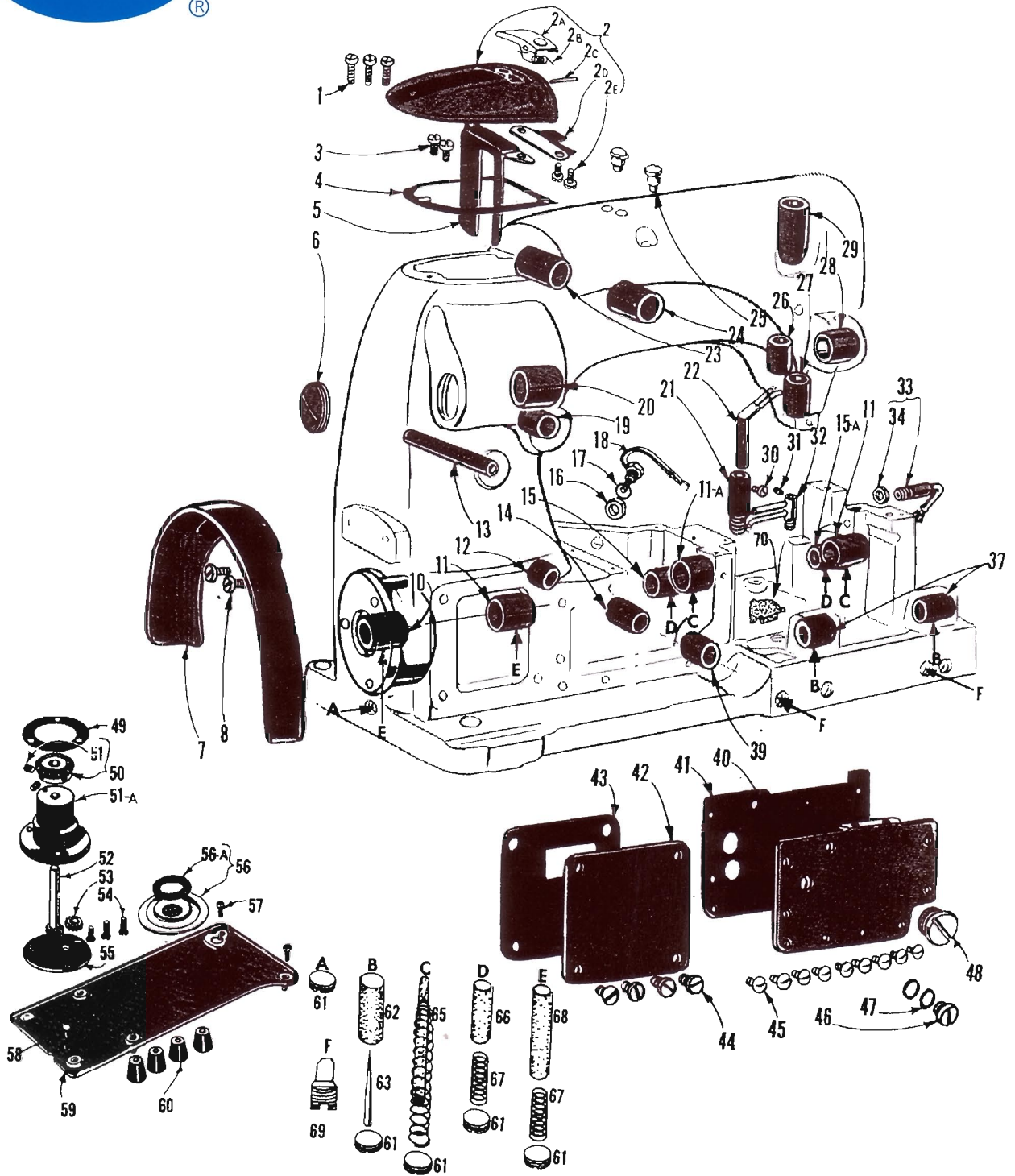




Main Frame, Miscellaneous Covers and Plates

REF#	PART NO.	DESCRIPTION	AMT REQ.
1	22585A	Screw	2
2	22524	Screw	7
3	53782B	Oil Reservoir Top Cover	1
4	51382A	Gasket	1
5	22839C	Screw	2
6	51281P-207	Cloth Plate Cover	1
7	51281AC	Cloth Plate Cover Spring	1
8	22760A	Screw	3
8A	35772H	Spring Washer	1
9	22845B	Screw	1
10	80	Screw	3
11	53701	Cloth Plate	1
13	22570	Screw	2
14	22839	Screw	3
15	294	Screw	3
16	53782E	Head Cover	1
17	53782	Throat Plate Support	1
18	51280J	Dowel Pin, Lower	2
19	51280K	Dowel Pin, Upper	2
20	51270B	Needle Thread Pull-Off Wire	1
21	95	Screw	1
22	53724A	Throat Plate for TAP	1
22A	BACP	Throat Plate for BAC	1
23	FT-3	Throat Plate for FTW	1
24	21396BN	Needle Thread Lubricator	1
25	21396AG	Lubricating Felt	2
26	22517B	Screw	1
27	22889A	Adapter Screw	1
28	53758	Frame Thread Eyelet	1
29	20	Washer	1
30	22848	Screw	1
32	50-648Bik.	Lucite Oil Gauge	1
33	98A	Screw	3
34	52A	Frame Thread Eyelet, for Style TAP & BAC	3
35	158B	Frame Thread Eyelet for Style FTW	3
36	22539H	Plug Screw	1
37	53753G	Thrust Bracket	1
38	93	Screw	1
39	22513	Screw	4
40	35731A	Presser Bar Connection Guide Plate	2
41	95	Set Screw, for upper feed bell crank lever shaft	1
42	605A	Screw	1
43	53780A	Throat Plate Support Rod	1
44	12934A	Nut	1
45	53780C	Throat Plate Support Rod Bracket	1
46	136	Screw	1
47	51291A	Looper Thread Guard	1
48	98A	Screw, for Looper Thread Guard	1
49	22889D	Plug Screw	1
*	20	Washer, for 22848	3
*	22848	Screw, for 51282AH	3

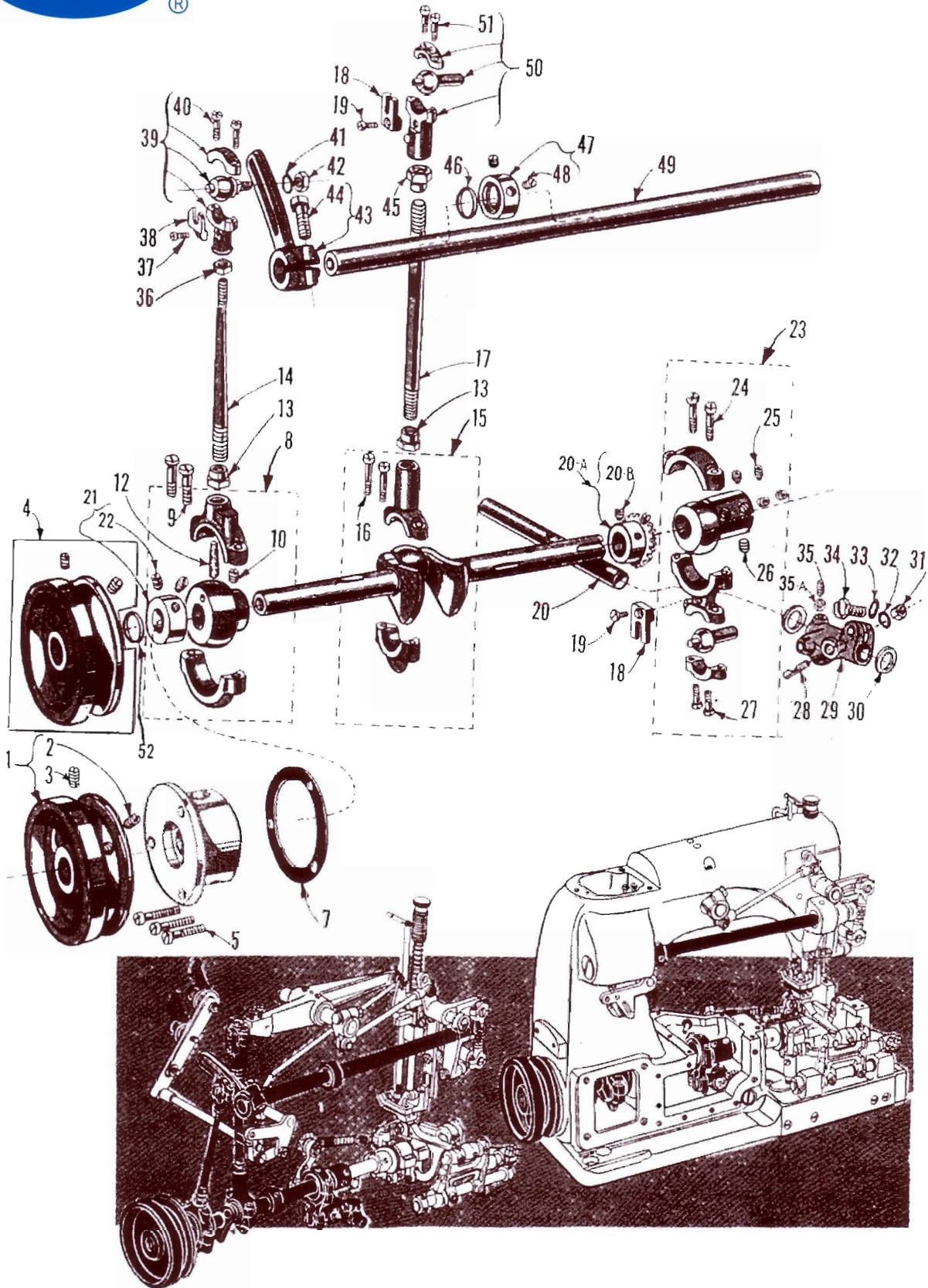
* Not Shown on picture plate.



Bushings, Oil Tubes, Wicks and Miscellaneous Covers

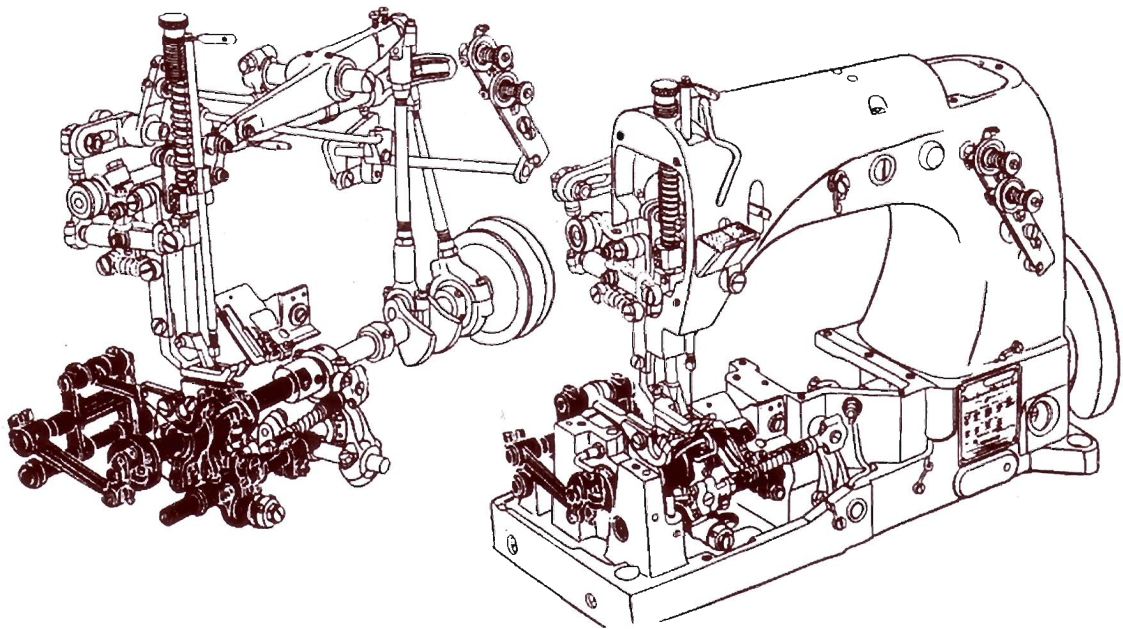
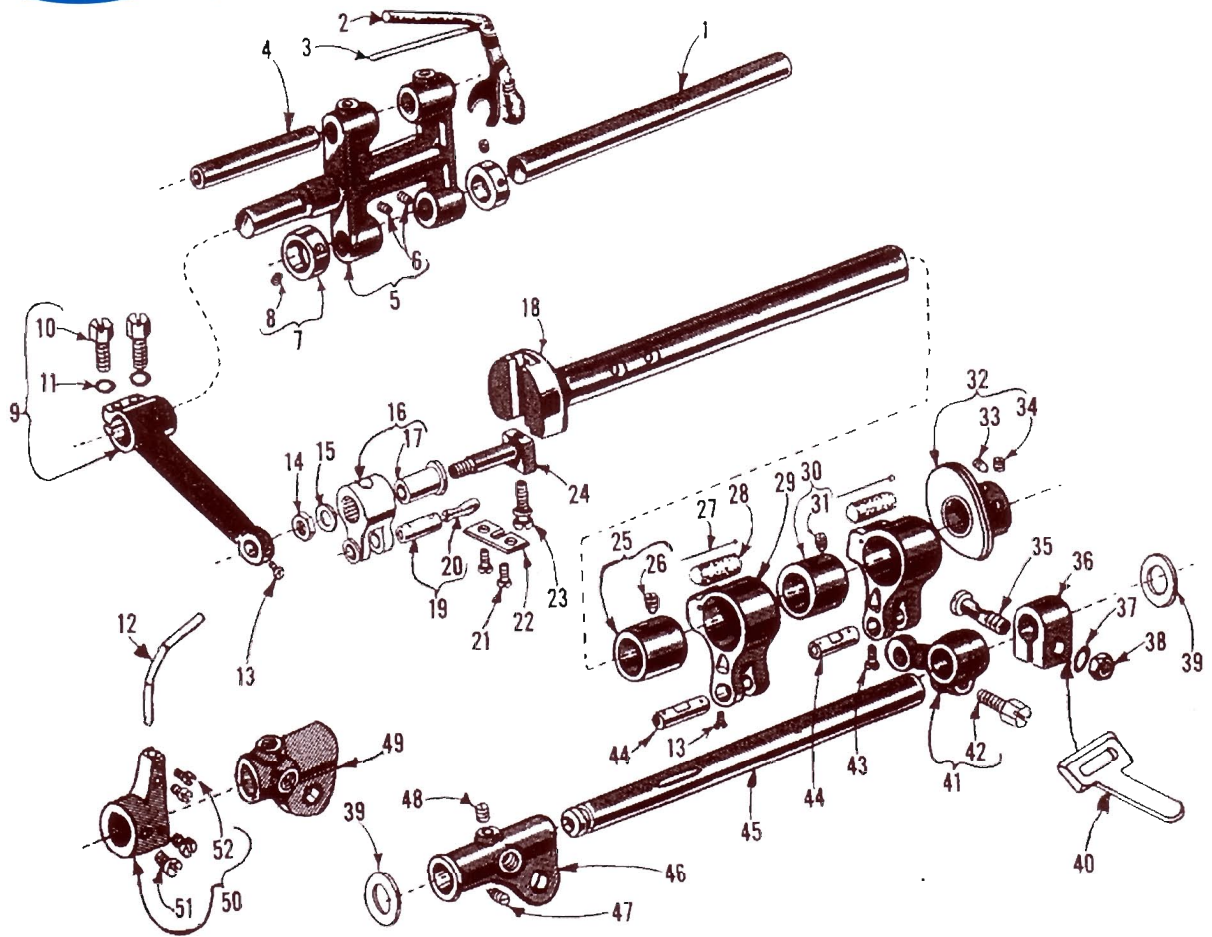
REF#	PART NO.	DESCRIPTION	AMT REQ.
1	22541B	Screw	3
2	52882AD	Crank Chamber Cove, Upper	1
2A	39582L	Oil Cap	1
2B	52882AC	Oil Cap Torsion Spring	1
2C	50-789Bik.	Oil Cap Hinge Pin	1
2D	52882AA	Drip Plate	1
2E	90	Screw	2
3	90	Screw	2
4	52882P	Gasket	1
5	52882Y	Baffle Plate	1
6	22539D	Plug Screw	1
7	BB21375AH	Belt Guard	1
8	93	Screw	2
10	52891B	Main Shaft Bushing Housing, includes bushing	1
11	52890C	Main Shaft Bushing, left and right	2
11A	51290T	Main Shaft Bushing, middle	1
12	51242	Looper Drive Lever Shaft Bushing, front	1
13	21657X	Tension Release Lever Shaft Bushing	1
14	51242R	Looper Drive Lever Shaft Bushing, middle	1
15	52944U	Looper Rock Shaft Bushing, right	1
15A	52944T	Looper Rock Shaft Bushing, left	1
16	258A	Nut(not used on later model machines)	1
17	6042A	Washer(not used on later model machines)	1
18	52894AM	Oil Tube, for right ball joint (not used on later model machines)	1
19	52883R	Presser Foot Lifter Lever Bushing	1
20	53790A	Upper Running Feed Drive Rock Shaft Bushing, right	1
21	52894AB	Oil Tube Holder	1
22	52894AC	Oil Tube, for feed lift and looper avoid eccentric	1
23	53750A	Needle Lever Bushing, front	1
24	53750B	Needle Lever Bushing, rear	1
25	80689A	Oil Cup	2
26	51254D	Needle Bar Bushing, Lower	1
27	53788	Presser Bar Bushing, Lower	1
28	52890C	Upper Running Feed Drive Rock Shaft Bushing, left	1
29	51254C	Needle Bar Bushing, Upper	1
30	90	Screw	1
31	22560B	Screw	1
32	52894AK	Oil Tube, for looper rocker and left ball joint	1
33	660-136	Feed Crank Link Oil Tube	1
34	258A	Nut	1
37	52936	Feed Rocker Shaft Bushing	2
39	51242S	Looper Drive Lever Shaft Bushing, rear	1
40	52882L	Oil Reservoir Back Cover	1
41	52882M	Gasket	1
42	52882AE	Crank Chamber Cover, Lower	1
43	52882U	Gasket	1
44	22548	Screw	4
45	22848	Screw	9
46	22733B	Screw	1
47	41394A	Gasket	2
48	22883A	Plug Screw	1
49	643-127Bik.	Gasket	1
50	51493BQ	Oil Pump Driven Gear	1
51	531	Screw	2
51A	51493AG	Oil Pump Housing	1
52	51493D	Oil Pump Driving Shaft	1
53	51493E	Oil Pump Driving Shaft Gear	2
54	22569B	Screw	3
55	51493AH	Oil Pump Housing Cover	1
56	51493BH	Filter Cap Assembly	1
56A	51493BJ	Washer, rubber	1
57	22823A	Screw	2
58	22823B	Screw	1
59	51493AY	Base Plate	1
60	51295A	Mounting Isolator	4
61	22571A	Plug Screw	1
62	666-111	Oil Wick	2
63	666-179	Wedge Pin	2
65	666-118	Oil Wick	2
66	666-65	Oil Wick	2
67	35178D	Spring	4
68	666-114	Oil Wick	2
69	22889C	Plug Screw	2
70	51493BK	Lint Filter Screen	1
*	22848	Screw, for 51282AH	2
*	51282AH	Oil Shield, end and back	1
*	20	Washer	2

* Not Shown on picture plate



Crankshaft and Upper Feed Driving Rock Shaft Parts

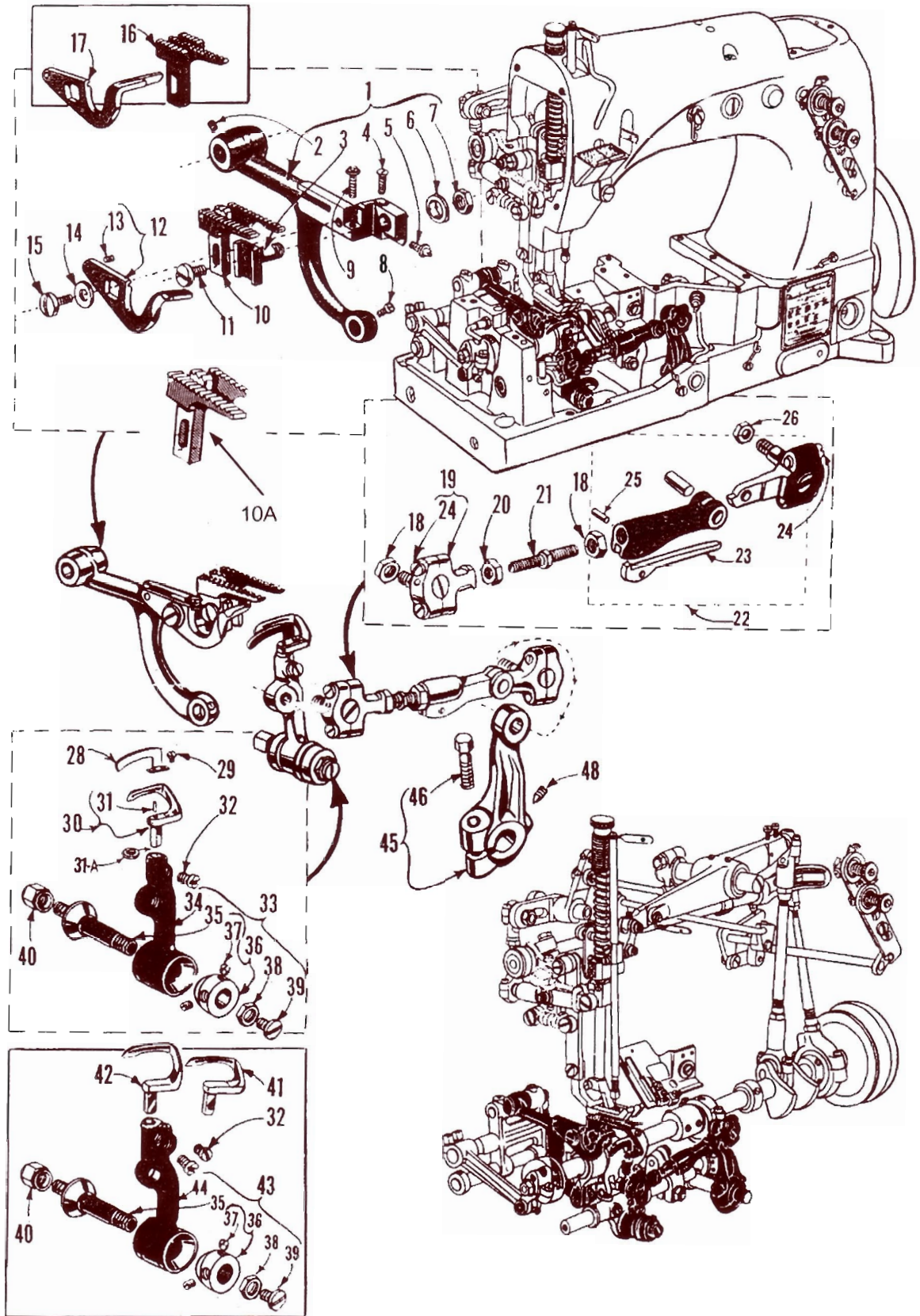
REF#	PART NO.	DESCRIPTION	AMT REQ
1	51321G	"V" Belt Handwheel	1
2	22894H	Spot Screw, for round and "V" belt handwheel	1
3	22894E	Set Screw for round and "V" belt handwheel	1
4	52921B	Round Belt Handwheel	1
5	22569B	Screw for housing	3
7	56390E	Crankshaft Bearing Housing Gasket	1
8	29126BJ	Upper Running Feed Drive Eccentric Assembly	1
9	22587	Bearing Cap Screw	2
10	22894C	Eccentric Set Screw	2
12	666-53	Lubricating Felt	1
13	15430D	Nut, right thread	2
14	53176	Top Feed Driving Connecting Rod	1
15	29476DT	Crankshaft Assembly	1
16	22559E	Bearing Cap Screw	2
17	51216	Needle Lever Connecting Rod	1
18	51243C	Ball Stud Guide Fork	2
19	22729	Screw	2
20	51242P	Looper Drive Lever Shaft	1
20A	51493BP	Pump Driving Gear	1
20B	22560B	Screw	2
21	9660B	Crankshaft Thrust Collar	1
22	98	Set Screw	2
23	29105Q	Looper Drive Eccentric Assembly	1
24	22559B	Bearing Cap Screw, upper	2
25	22894D	Eccentric Spot Screw	2
26	22894C	Eccentric Set Screw	3
27	22559A	Bearing Cap Screw, lower	2
28	52841G	Locking Stud	1
29	51242Y	Looper Drive Lever Rocker	1
30	51242L	Thrust Washer	2
31	52841J	Nut	1
32	51242M	Washer	1
33	51242M	Washer	1
34	22852A	Clamp Screw	1
35	81	Spot Screw	1
35A	12982	Lock Nut	1
36	269	Nut, Left thread	1
37	22747	Screw	1
38	41255B	Ball Stud Guide Fork	1
39	52854	Upper Running Feed Drive Connecting Rod Ball Joint Assembly	1
40	22729C	Bearing Cap Screw	2
41	454A	Washer	1
42	258	Nut	1
43	52752	Upper Feed Driving Shaft Segment Lever	1
44	22811	Clamp Screw	1
45	15430C	Nut, left thread	1
46	660-202	Oil Seal Ring	1
47	52849C	Upper Running Feed Drive Rock Shaft Thrust Collar	1
48	95	Set Screw	2
49	52849	Upper Running Feed Drive Rock Shaft	1
50	29066P	Needle Lever Connecting Rod Ball Joint	1
51	97A	Bearing Cap Screw	2
52	660-202	"O" Ring for pulley	1



Feed Rocker Shaft, Main Shaft and Looper Rocker Frame Rocker Shaft Parts

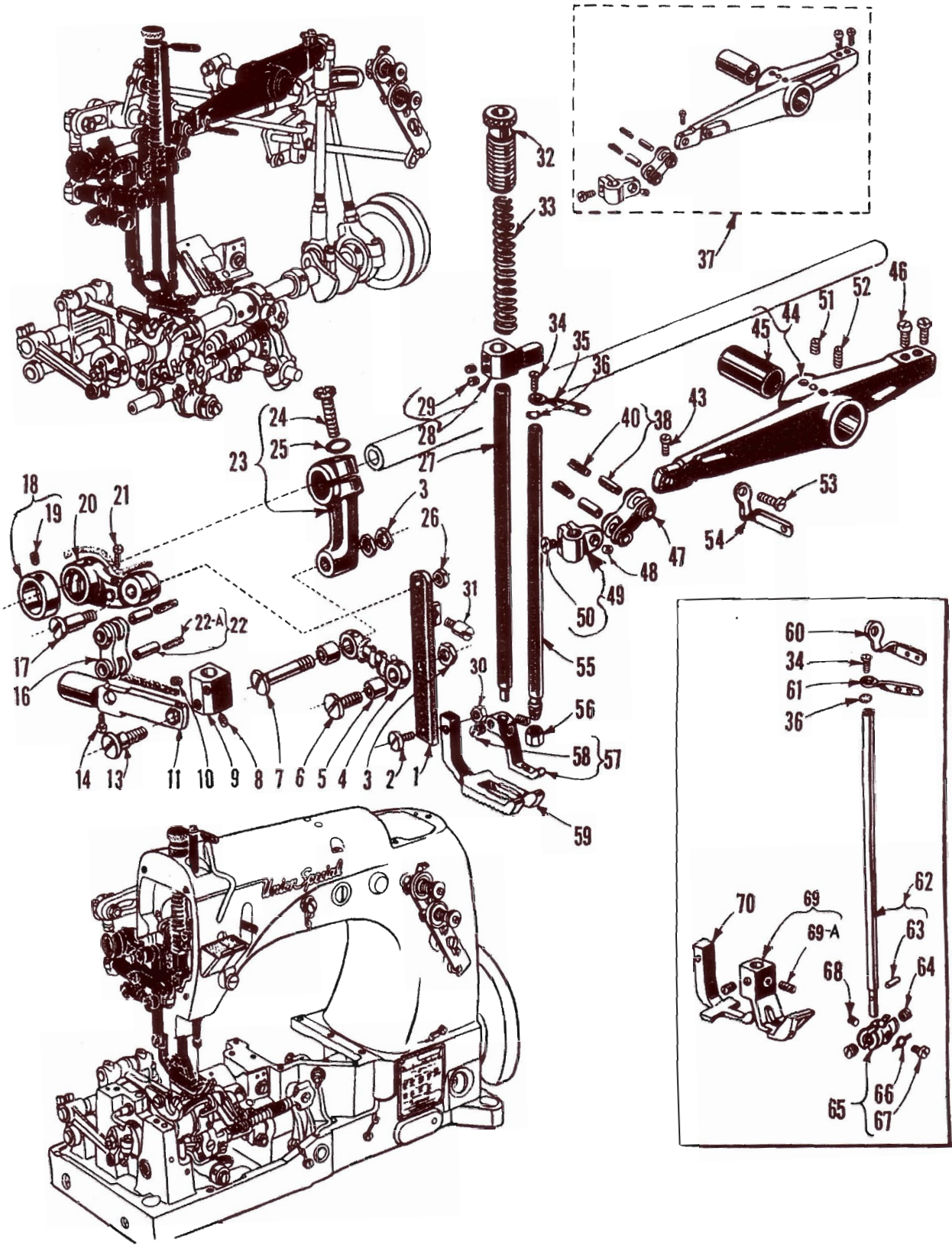
REF#	PART NO.	DESCRIPTION	AMT REQ.
1	8	Feed Rocker Shaft	1
2	51134P	Lubricating Felt	1
3	51134R	Lubricating Felt Guard	1
4	51134C	Feed Bar Shaft	1
5	51235	Feed Rocker	1
6	98	Screw	2
7	482	Feed Rocker Shaft Collar	2
8	98	Screw	2
9	51235A	Feed Rocker Arm	1
10	22519C	Screw	2
11	51235G	Washer	2
12	51325	Looper Needle Guard for Style BAC and TAP	1
13	77	Set Screw	2
14	269	Nut, Left thread	1
15	20	Washer	1
16	51236E	Feed Crank Link Assembly	1
17	51236F	Feed Crank Link Ferrule	1
18	53722	Mainshaft	1
19	51054	Feed Crank Link Pin	1
20	666-149	Lubricating Felt	1
*21	22768	Screw	2
*22	51236B	Feed Crank Stud Cap	1
23	82	Stitch Regulating Screw	1
24	51236G	Feed Crank Stud	1
25	43	Feed Lift Eccentric, marked "F", .062 inch throw	1
26	22894D	Spot Screw	1
27	PI-18	Pin	2
28	666-82	Lubricating Felt	2
29	51145	Feed Lift and Looper Avoid Eccentric Link	2
30	43C	Looper Avoid Eccentric, marked "C" .80 inch throw	1
31	22894D	Spot Screw	1
32	51423C	Take-Up	1
33	96	Time Spot Screw	1
34	22580D	Set Screw	1
35	55244G	Locking Stud	1
36	51244N	Looper Rock Shaft Collar	1
37	51216N	Washer	1
38	18	Nut	1
39	51244L	Thrust Washer	2
40	52470	Stop, for looper connecting rod	1
41	51244B	Looper Rock Shaft Arm	1
42	22519H	Screw	1
43	22768	Screw	1
44	51236A	Link Pin	2
45	51144	Looper Rock Shaft	1
46	51244	Looper Rock Frame for Style FTW	1
47	96	Spot Screw	1
48	98	Set Screw	1
49	52444B	Looper Rocker Frame for Style BAC and TAP	1
50	52825D	Looper Needle Guard Holder, for Style BAC and TAP	1
51	33174B	Screw	2
52	22563	Screw	2

* Not required with late model mainshaft.



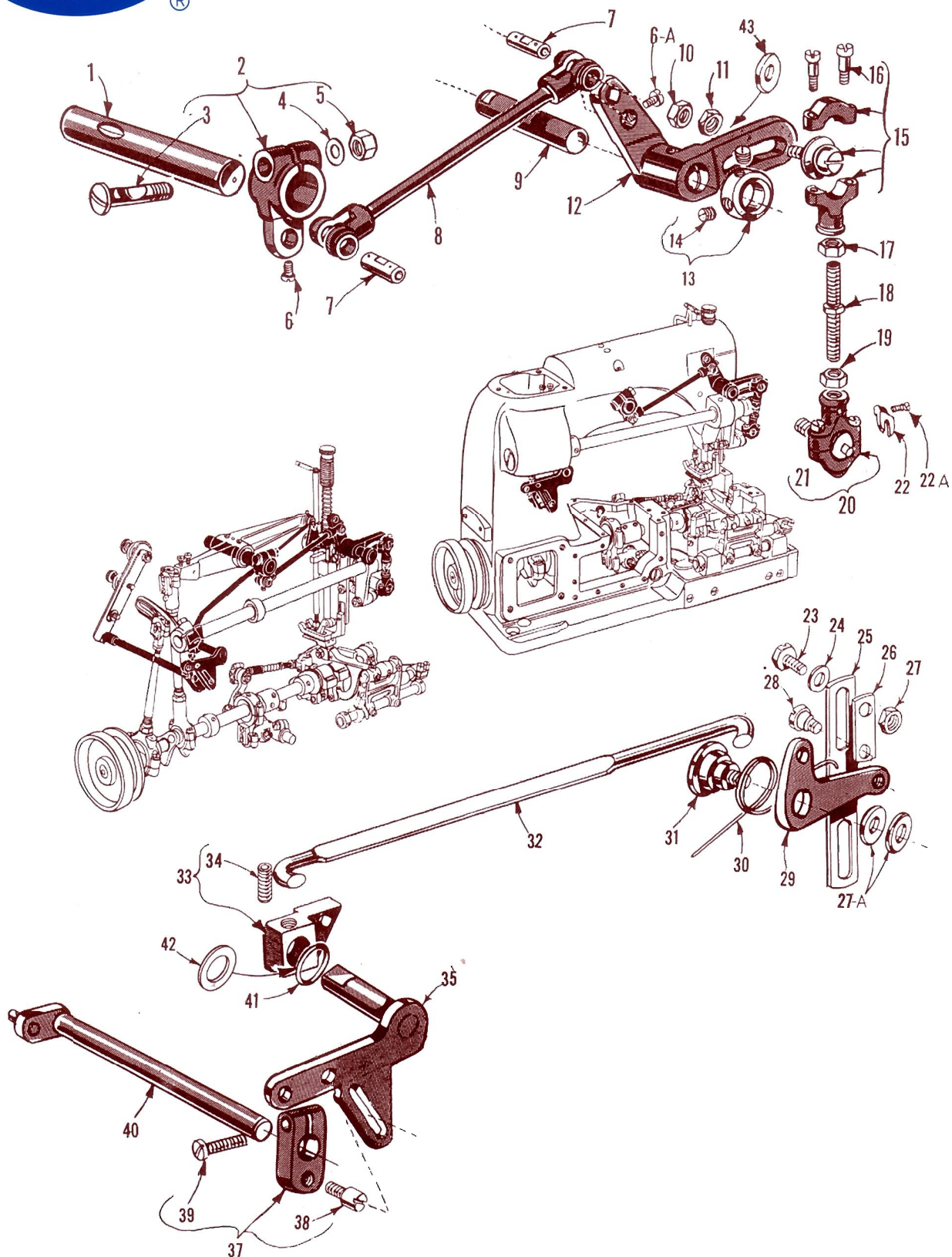
Feed Bar, Looper Rocker and Looper Connecting Rod Parts

REF#	PART NO.	DESCRIPTION	AMT REQ.
1	51134X	Feed Bar	1
2	22560B	Set Screw	1
3	56334E	Feed Dog Holder	1
4	538	Feed Dog Height Adjusting Screw	1
5	22863	Feed Dog Holder Adjusting Screw	1
6	6042A	Washer	1
7	258	Feed Dog Holder Nut	1
8	77	Screw	1
9	22834	Needle Guard Adjusting Screw	1
10	53705A	Lower Feed Dog for style TAP	1
10A	BACF	Lower Feed Dog for style BAC	1
11	22528	Screw	1
12	51225	Needle Guard for Style BAC and TAP	1
	53825	Needle Guard for Style FTW	1
13	22801	Needle Guard Guide Screw	1
14	51225W	Washer	1
15	22585B	Screw	1
16	FT-4	Lower Feed Dog For Style FTW	1
17	53825	Needle Guard for Style FTW	1
18	18	Nut	2
19	52841A	Looper Connecting Rod Ball Joint, Left	1
20	269	Nut, Left Thread	1
21	51240D	Looper Connecting Rod , 1 11/32 inches long	1
22	51241K	Looper Connecting Rod Ball Joint, right	1
23	56341G	Spring	1
24	22729C	Bearing Cap Screw	4
25	50-458 Blk.	Spring Pin	1
26	12538	Nut	1
28	53710	Looper Needle Guard	1
29	73A	Screw	1
30	51409C	Looper For Style BAC and TAP	1
31	1740	Looper Needle Guard Pin	1
31A	21211	Looper Collar for Style TAP and BAC	1
32	73	Screw for Style TAP and BAC	1
	73	Screw for Style FTW	1
33	29192	Looper Rocker Assembly for Style BAC and TAP	2
34	51213	Looper Rocker	1
35	51745	Looper Rocker Cone Stud	1
36	15465F	Looper Rocker Cone	1
37	88	Set Screw	2
38	258A	Lock Nut	1
39	22829	Lock Nut Screw	1
40	51246	Nut	1
41	51508M-18	Looper front for Style FTW	1
42	51909C	Looper rear for Style FTW	1
43	29192D	Looper Rocker Assmbly for Style FTW	1
44	51513	Looper Rocker	1
45	51242W	Looper Drive Lever	1
46	22811B	Clamp Screw	1
48	22894H	Spot Screw	1



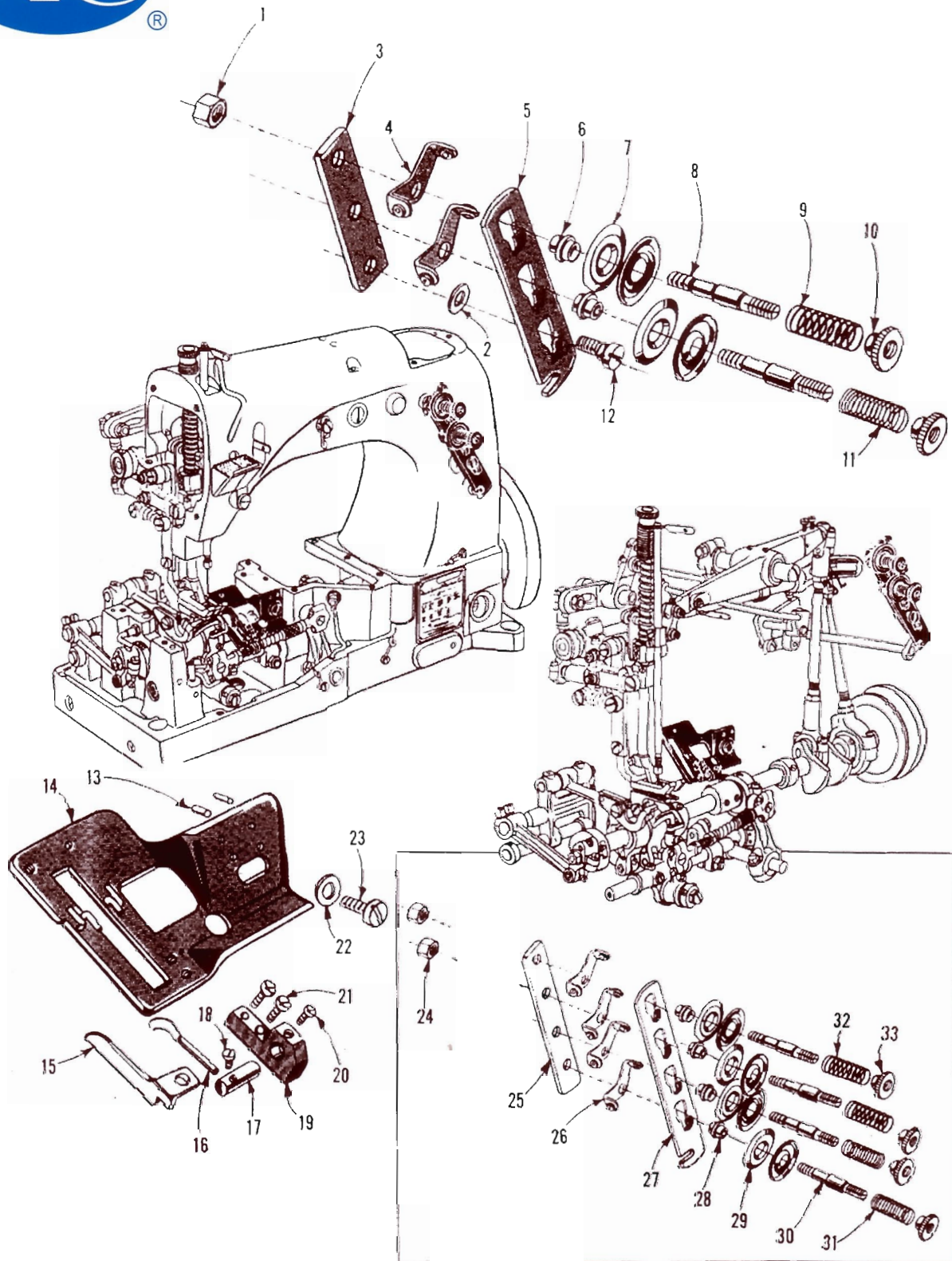
Upper Feed Drive, Needle Bar Drive and Presser Bar Parts

REF#	PART NO.	DESCRIPTION	AMT REQ.
1	53753H	Upper Running Feed Bar	1
2	22585S	Screw, for upper feed dog	1
3	9937	Nut	3
4	51770-88	Upper Running Feed Bar Spacing Link	1
5	51771	Upper Running Feed Bar Link Bushing	2
6	22773A	Screw	1
7	22773B	Screw	1
8	22764A	Screw	1
9	53783D	Presser Bar Connection Block	1
10	5531	Screw	1
11	53755	Upper Running Feed Foot Lifter Link	1
13	22787 D	Screw	1
14	J87 J	Screw	1
16	54	Connection Link	1
17	22598D	Screw	1
18	9660B	Upper Running Feed Drive Rock Shaft Collar	1
19	98	Screw	2
20	53752E	Upper Running Feed Lifter Drive Link	1
21	J87J	Screw	1
22	51054	Link Pin	2
22A	666-149	Lubricating Felt	1
23	53752D	Upper Running Feed Driving Lever	1
24	627A	Clamp Screw	1
25	80557	Washer	1
26	12934A	Nut	1
27	53788B	Presser Bar	1
28	53783C	Presser Bar Connection and Guide	1
29	22560B	Screw	2
30	41071G	Nut	1
31	33174B	Screw	1
32	52889A	Presser Bar Bushing, upper and presser spring regulator	1
33	53787	Presser Spring	1
34	22768	Screw	1
35	56358	Needle Bar Thread Eyelet, for Style BAC and TAP	1
36	652C-9	Needle Bar Eyelet Lock Washer	1
37	29348U	Needle Lever Assembly	1
38	51054	Needle Bar Connection Link Pin	2
40	666-149	Lubricating Felt	1
43	77	Screw	1
44	53715	Needle Lever	1
45	51250A	Bushing	1
46	22528	Screw	2
47	56534A	Needle Bar Connection Link	1
48	22564	Screw	1
49	51254J	Needle Bar Connection	1
50	22562A	Screw	1
51	22591A	Screw	1
52	HA81	Screw	1
53	22768	Screw	1
54	56358A	Needle Lever Thread Eyelet, for Style BAC and TAP	1
55	51217	Needle Bar, for Style BAC and TAP	1
56	56	Needle Clamp Nut, for Style BAC and TAP	1
57	53720	Presser Foot, for Style BAC and TAP	1
58	78	Screw for Style BAC and TAP	2
59	53726	Upper Feed Dog, for Style TAP	1
60	56458	Needle Lever Thread Eyelet for Style FTW	1
61	56458A	Needle Bar Thread Eyelet for Style FTW	1
62	56517B-18	Needle Bar for Style FTW	1
63	50J-16	Needle Stop Pin	1
64	98	Set Screw for needles for Style FTW	2
65	7018E-5	Needle Bar Head for Style FTW	1
66	7040-6	Thread Guide	1
67	187B	Thread Guide Screw	1
68	89	Screw for Style FTW	1
69	FT-2	Presser Foot for Style FTW	1
69A	88	Screw	2
70	FT-1	Upper Feed Dog, for Style FTW	1



Upper Feed Lift and Presser Foot Lifter Parts

REF#	PART NO.	DESCRIPTION	AMT REQ
1	53750	Needle Lever and Upper Feed Lift Driving Lever Shaft	1
2	53754	Upper Running Feed Lift Driving Lever	1
3	55235D	Locking Stud	1
4	6042A	Locking Stud Washer	1
5	55235E	Locking Stud Nut	1
6	77	Screw	1
6A	22768	Screw	1
7	51236A	Link Pin	2
8	53754A	Upper Running Feed Driving Connecting Rod Ball Joint Assembly	1
9	53754F	Upper Feed Bell Crank Lever Shaft	1
10	18	Ball Joint Locking Nut	1
11	15037A	Ball Joint Regulating Nut	1
12	53754D	Upper Feed Bell Crank Lever	1
13	482C	Collar	1
14	22894C	Set Screw	2
15	53754G	Bell Crank Lever Ball Joint, upper	1
16	22729C	Bearing Cap Screw	2
17	15037A	Nut, right thread	1
18	43242N	Connecting Rod, one inch long	1
19	43242P	Nut, left thread	1
20	43241D	Bell Crank Lever Ball Joint, lower	1
21	22729C	Bearing Cap Screw	2
22	41255B	Fork for 43421D	1
22A	22747	Screw for 41225B	1
23	22882	Screw	1
24	21657E	Washer	1
25	53783P	Presser Foot Lifter Lever Link, adjustable	1
26	53783R	Presser Foot Lifter Lever Adjusting Plate	1
27	18	Nut	1
27A	9255	Washer	2
28	240	Screw	1
29	53783L	Presser Foot Lifter Lever Bell Crank	1
30	52883S	Presser Foot Lifter Lever Crank Spring	1
31	22557B	Screw	1
32	56383AB	Presser Foot Lifter Lever Connecting Rod	1
33	53783N	Presser Foot Lifter Lever, internal	1
34	22537	Screw	1
35	53783T	Presser Foot Lifter and Tension Disc Release Lever	1
37	21657Y	Tension Release and Foot Lifter Lever Shaft Connection	1
38	402	Screw	1
39	22596	Screw	1
40	21657W	Tension Release and Foot Lifter Lever Shaft	1
41	660-207	Oil Seal Ring	1
42	39552C	Washer	1
43	21657E	Washer for 53754G	1



Thread Tension Parts for Single Needle Machine

REF#	PART NO.	DESCRIPTION	AMT REQ.
1	43266	Tension Post Nut	1
2	80557	Spacing Washer	3
3	52892	Tension Post Support	1
4	51192G	Tension Post Thread Eyelet	2
5	21657-3	Tension Disc Separator	1
6	51292A	Tension Post Ferrule	2
7	109	Tension Disc	4
8	51292G	Tension Post	2
9	51292F-14	Tension Spring, Needle Thread	1
10	51292C	Tension Regulating Nut	2
11	51292F-1	Tension Spring, Looper Thread	1
12	22598C	Screw	1

Looper Thread Take-Up Parts

REF#	PART NO.	DESCRIPTION	AMT REQ.
13	50-216Blk.	Dowel Pin	2
14	51257P	Cast Off Support Plate	1
15	51204B	Auxiliary Cast Off	1
16	51204	Cast Off Wire	1
17	51204A	Cast Off Wire Support	1
18	22798A	Screw	1
19	51204C	Cast Off Retaining Wire Support Bracket	1
20	77	Screw	1
21	J87J	Screw	2
22	21657E	Washer	1
23	22528	Screw	1

Thread Tension Parts for Two Needle Machine

REF#	PART NO.	DESCRIPTION	AMT REQ.
24	43266	Tension Post Nut	2
25	56382X	Tension Post Support	1
26	51192G	Tension Post Thread Eyelet	4
27	21657-4	Tension Disc Separator	1
28	51292A	Tension Post Ferrule	4
29	109	Tension Disc	8
30	51292G	Tension Post	4
31	51292F-1	Tension Spring, Looper Thread	2
32	51292F-14	Tension Spring, Needle Thread	2
33	51292C	Tension Regulating Nut	4

NUMERICAL INDEX OF PARTS

Part No.	Page No.	Part No.	Page No.	Part No.	Page No.
8.....	15	666-114	11	22569 B	11, 13
18.....	15, 17, 21	666-118	11	22570	9
PI-18.....	15	666-149	15, 19	22571 A	11
20.....	9, 11, 15	666-179	11	22580 D	15
43.....	15	1740.....	17	22585 A	9
43 C.....	15	6042 A	11, 17, 21	22585 B	17
50 J-16	19	7018 E-5.....	19	22585 S	19
50-216 Blk.	23	7040-6.....	19	22587	13
50-458 Blk.	17	9255.....	21	22591 A	19
50-648 Blk.	9	9660 B.....	13, 19	22596	21
50-789 Blk.	11	9937.....	19	22598 C	23
52 A.....	9	12538.....	17	22598 D	19
56.....	19	12934 A.....	9, 19	22651 CD.....	25
73.....	17	12982.....	13	22729	13
73 A.....	17	15037 A.....	21	22729 C	13, 17, 21
77.....	15, 17, 19	15430 C.....	13	22733 B.....	11, 19
	21, 23	15430 D.....	13	22747	13, 21
78.....	19	15465 F.....	17	22760 A	9
80.....	9	21101 H.....	25	22764 A	19
81.....	13	21104 B.....	25	22768	15, 19, 21
HA81.....	19	21104 H.....	25	22773 A	19
82.....	15	21104 V.....	25	22773 B	19
J87 J.....	19, 23	21114.....	25	22787 D	19
88.....	17, 19	21114 A.....	25	22798 A.....	23
89.....	19	21114 D.....	25	22801	17
90.....	11	21114 H.....	25	22810	25
93.....	9, 11	21114 S.....	25	22811	13
95.....	9, 13	21114 T.....	25	22811 B	17
96.....	15	21114 U.....	25	22823 A	11
97 A.....	13	21114 W.....	25	22823 B	11
98.....	13, 15, 19	21211.....	17	22829	17
98 A.....	9	BB21375 AH	11	22834	17
109.....	23	21396 AG.....	9	22839	9
136.....	9	21396 BN.....	9	22839 C	9
158 B.....	9	21657-3.....	23	22845 B	9
187 B.....	19	21657-4.....	23	22848	9, 11
240.....	21	21657 E.....	21, 23	22852 A.....	13
258.....	13, 17	21657 W.....	21	22863	17
258 A.....	11, 17, 25	21657 X.....	11	22882	21
269.....	13, 15, 17	21657 Y.....	21	22883 A	11
294.....	9	22513	9	22889 A.....	9
402.....	21	22517 B.....	9	22889 C	11
454 A.....	13	22519 C.....	15	22889 D	9
482.....	15	22519 H.....	15	22894 C	13, 21
482 C.....	21	22524.....	9	22894 D.....	13, 15
531.....	11, 19	22528.....	17, 19, 23	22894 E.....	13
538.....	17	22537.....	21	22894 H	13, 17
605 A.....	9	22539 D.....	11	29066 P	13
627 A.....	19	22539 H.....	9	29105 Q	13
643-127 Blk.	11	22541 B.....	11	29126 BJ.....	13
652-16	25	22548.....	11	29192	17
652 C-9.....	19	22557 B.....	21	29192 D.....	17
660-136.....	11	22559 A.....	13	29348 U	19
660-202.....	13	22559 B.....	13	29476 DT.....	13
660-207.....	21	22559 E.....	13	33174 B	15, 19
666-53.....	13	22560 B.....	11, 13, 17	35178 D	11
666-65.....	11		19	35731 A	9
666-82.....	15	22562 A.....	19	35772 H	9
666-111.....	11	22563	15	39552 C	21
		22564	19	39582 L	11

NUMERICAL INDEX OF PARTS

Part No.	Page No.	Part No.	Page No.	Part No.	Page No.
41071 G	19	51292 A	23	53705	17
41255 B	13, 21	51292 C	23	53710	17
41394 A	11	51292 F	23	53715	19
43241 D	21	51292 G	23	53716	13
43242 N	21	51295 A	11	53720	19
43242 P	21	51321 G	13	53722	15
43266	23	51325	15	53724 A	9
51054	15, 19	51382 A	9	53726	19
51134 C	15	51409 C	17	53750	21
51134 P	15	51423 C	15	53750 A	11
51134 R	15	51493 D	11	53750 B	11
51134 X	17	51493 E	11	53752	13
51144	15	51493 AG	11	53752 D	19
51145	15	51493 AH	11	53752 E	19
51192 G	23	51493 AY	11	53753 G	9
51204	23	51493 BH	11	53753 H	19
51204 A	23	51493 BJ	11	53754	21
51204 B	23	51493 BK	11	53754 A	21
51204 C	23	51493 BP	13	53754 D	21
51213	17	51493 BQ	11	53754 F	21
51216	13	51508 M-18	17	53754 G	21
51216 N	15	51513	17	53755	19
51217	19	BACF	17	53758	9
51225	17			53780	9
51225 W	17	51745	17	53780 A	9
51235	15	51770-88	19	53780 B	9
51235 A	15	51771	19	53782 B	9
51235 G	15	51909 C	17	53782 E	9
51236 A	15, 21	52444 B	15	53783 C	19
51236 B	15	52470	15	53783 D	19
51236 E	15	52825 D	15	53783 L	21
51236 G	15	52841 A	17	53783 N	21
51240 D	17	52841 G	13	53783 P	21
51241 K	17	52841 J	13	53783 R	21
51242 L	13	52849	13	53783 T	21
51242 M	13	52849 C	13	53787	19
51242 P	13	52854	13	53788 A	11
51242 R	11	52882 L	11	53788 B	19
51242 S	11	52882 M	11	53790 A	11
51242 W	17	52882 P	11	FT4	17
51242 Y	13	52882 U	11	FT2	19
51242 Z	11	52882 Y	11	FT3	9
51243 C	13	52882 AA	11	53825	17
51244	15	52882 AC	11	FT1	19
51244 B	15	52882 AD	11	55235 D	21
51244 L	15	52882 AE	11	55235 E	21
51244 N	15	52883 R	11	55244 G	15
51246	17	52883 S	21	56334 E	17
51250 A	19	52889 A	19	56341 G	17
51254 C	11	52890 C	11	56354 A	19
51254 D	11	52891 B	11	56358	19
51254 J	19	52892	23	56358 A	19
51257 P	23	52894 AB	11	56382 X	23
51270 B	9	52894 AC	11	56383 AB	21
51280 J	9	52894 AK	11	56390 E	13
51280 K	9	52894 AM	11	56458	19
51281 P-207	9	52921 B	13	56458 A	19
51281 AC	9	52936	11	56517 B	19
51282 AH	11	52944 T	11	80557	19, 23
51290 T	11	52944 U	11	80689 A	11
51291 A	9	53701	9		



In Our Fourth Generation

Family-owned and - operated for more than 60 years, Newark Caplan Sewing Machines and N-C Carpet Binding & Equipment Corp. have pioneered, designed, and engineered numerous innovations utilizing industrial sewing machines.

Back in the '30s, Louis Caplan started the family chain, servicing the needle trade outfitting workshops in New York and New Jersey when the garment industry was in its prime. He also developed a line of sewing machine clutches under the name of Atlas Clutch.

Newark Caplan Sewing Machine grew rapidly, servicing the garment industry, alteration shops, custom tailoring rooms, and department store workrooms. During this time, Louis concentrated his

efforts on Atlas Rapid Racks, a new line of pipe fittings for conveyor racks used in the movement and storage of merchandise in large plants. He also developed a complete line of blindstitch machines under the trade name "Rex."

Family members A. Joseph Caplan and Maliad Maher joined the business after service in the military.

Maher became the expert in setting up entire garment factories with every type of sewing machine needed to manufacture clothing, including stands, clutches and accessories

A. Joseph Caplan branched out in the development of special sewing machines for the carpet industry. He is

credited with developing the first bobbinless, zigzag, double-lockstitch machine to tape and bind carpets, top and bottom, in one operation. The process was so unique it received a patent.

Formerly in its third generation, Mark Caplan and Mel Maher welcome Mal Maher into their organization. Mal has received his Bachelor of Science and his MBA in Marketing and Finance, and is certainly a welcome addition in fourth generation management.

Meantime, N-C continues its development of new equipment boasting a full range of quality made binders, sergers, cutters, bevelers, fringers, carvers and tapestry binders etc...

When it comes to engineering, design and quality, there is only one name. Its starts with N and ends with C.

N-C Carpet Binding and Equipment Corp.

858 Summer Avenue * Newark, New Jersey 07104
PHONE: 973-481-3500 * TOLL FREE: 1-800-526-1184
FROM CANADA: 1-800-336-1184 * FAX: 973-481-0839
WEB SITE: <http://www.n-ccarpet.com>
EMAIL: nccarpet1@aol.com